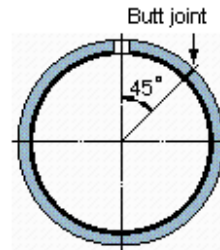
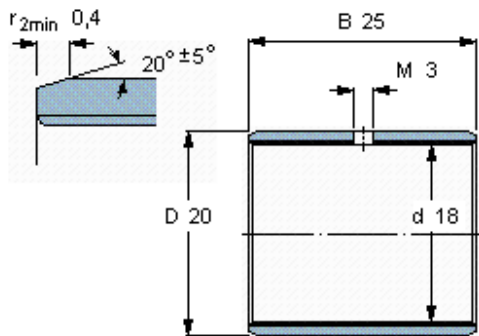


Composite dry sliding bushings, metric dimensions

Principal dimensions			Basic load ratings		Mass	Designation
d	D	B	dynamic	static		
mm			C	C0	kg	-
<b>18</b>	20	25	kN		0,0084	PCM 182025 M
			54	112		



**Specific load factor** K 120  
**Material constant**  $K_M$  1900